

24

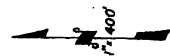
Bk. 27

POR. S 1/2 SEC. 30, & POR. N 1/2 SEC. 31, T. 3 N., R. 17 E., M. D. B. & M. Tax Area Code 76-015

31-01

REVISION DATE
8-23-79

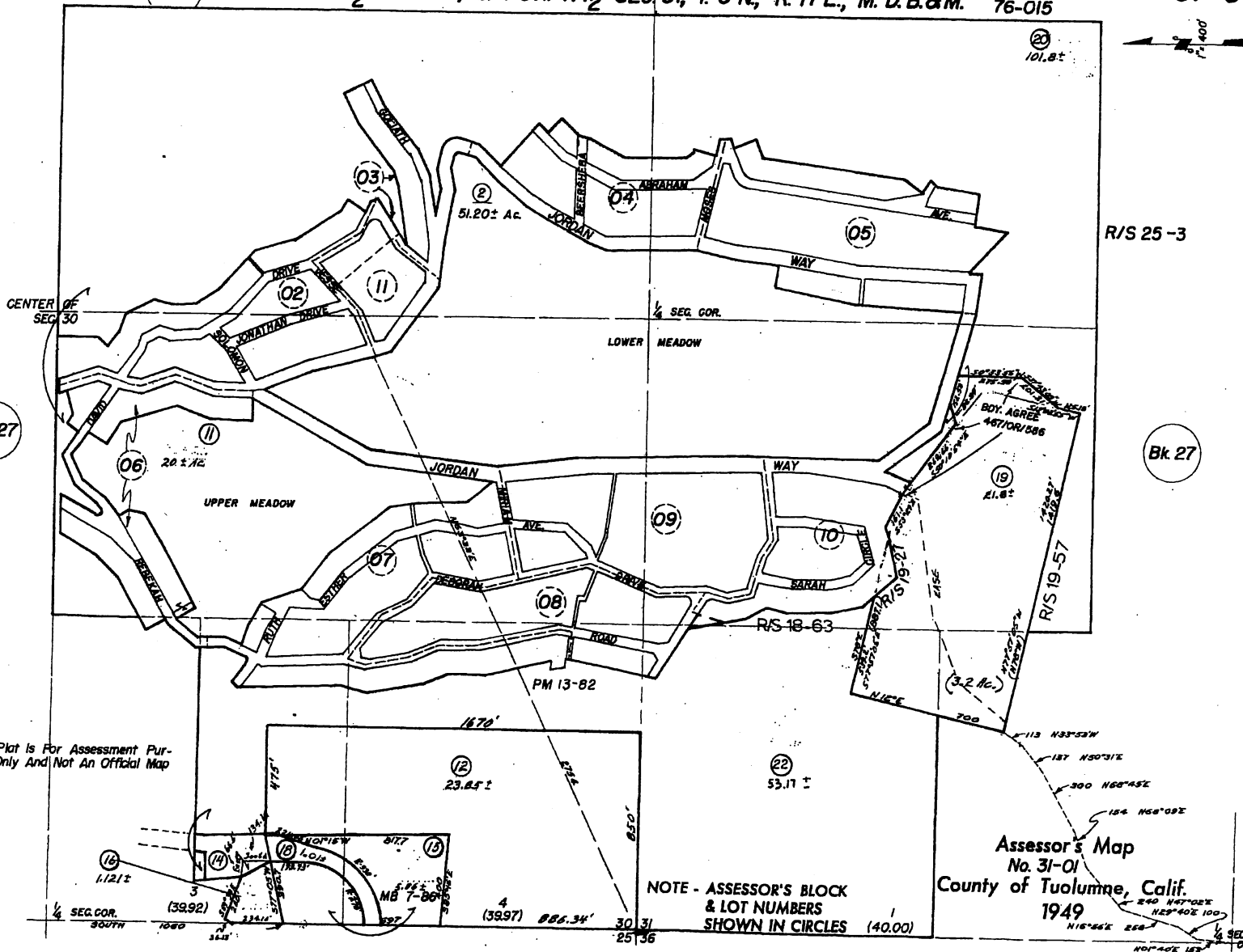
101.8±



R/S 25-3

Bk. 27

Bk. 27



Note: This Plat is For Assessment Purposes Only And Not An Official Map

NOTE - ASSESSOR'S BLOCK & LOT NUMBERS SHOWN IN CIRCLES (40.00)

Assessor's Map No. 31-01 County of Tuolumne, Calif. 1949

1/4 SEC. 31